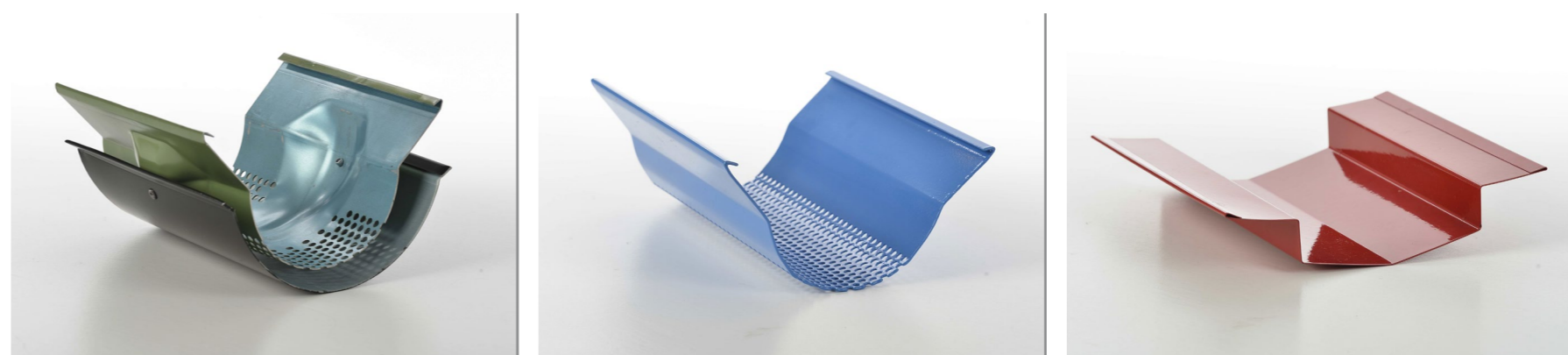
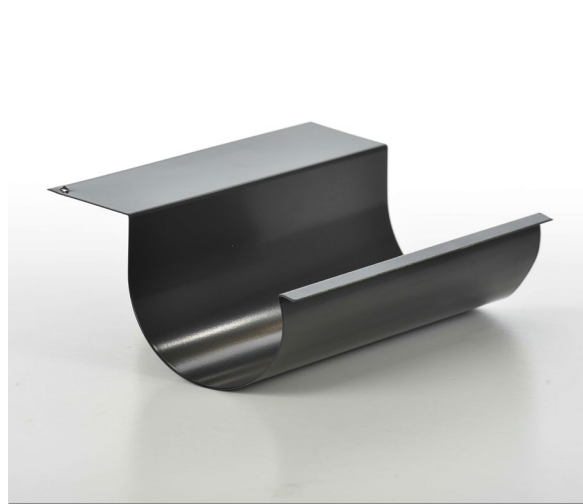
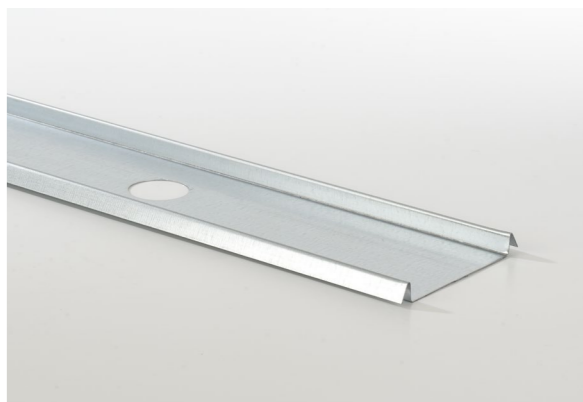
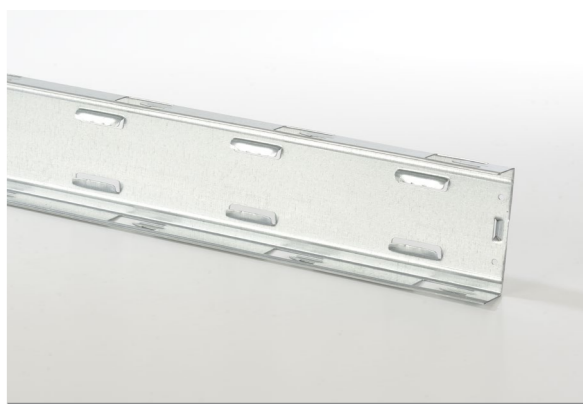
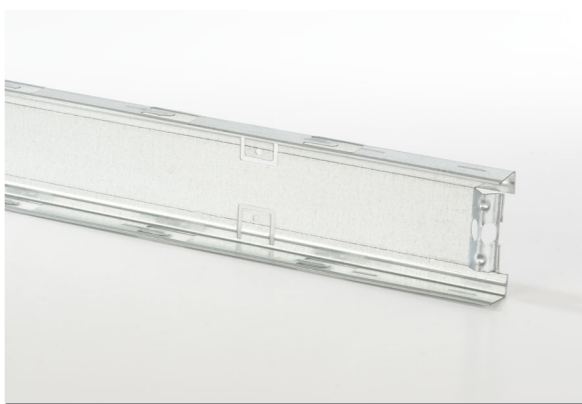
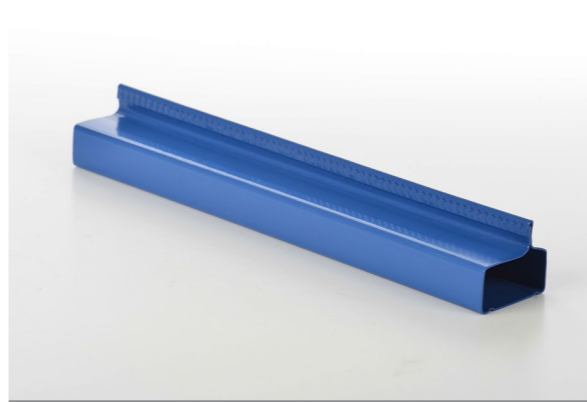


ELEMENTI PLUVIALI | PLUVIAL ELEMENTS
ÉLÉMENTS PLUVIAUX | REGENFALLROHRE

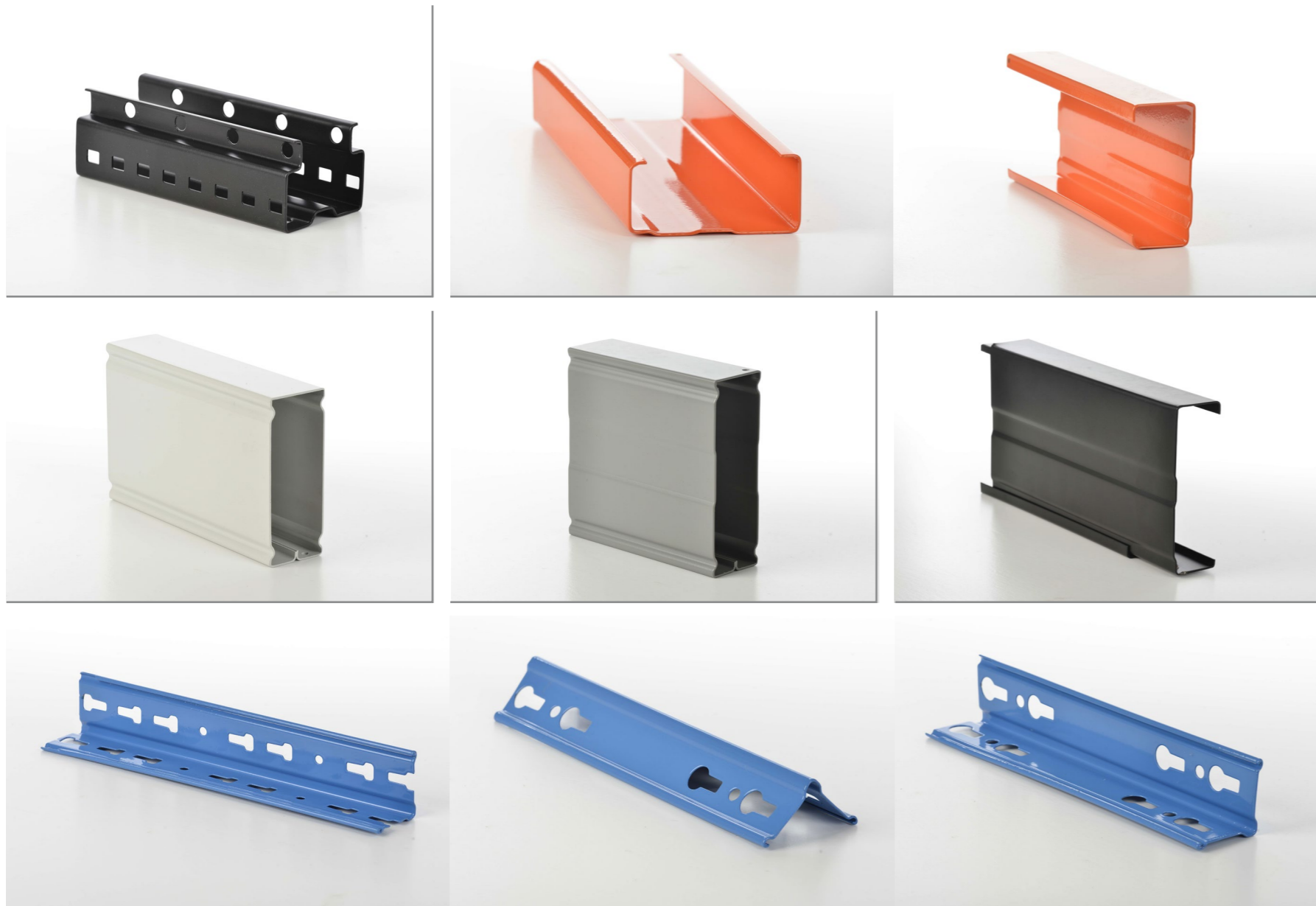




FINESTRE E PORTE | WINDOWS AND DOORS
FENÊTRES ET PORTES | FENSTERN UND TÜREN

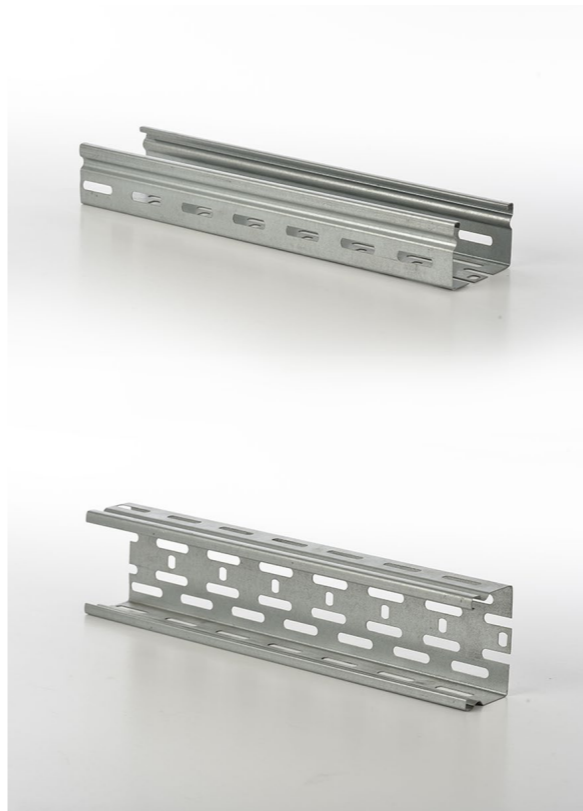
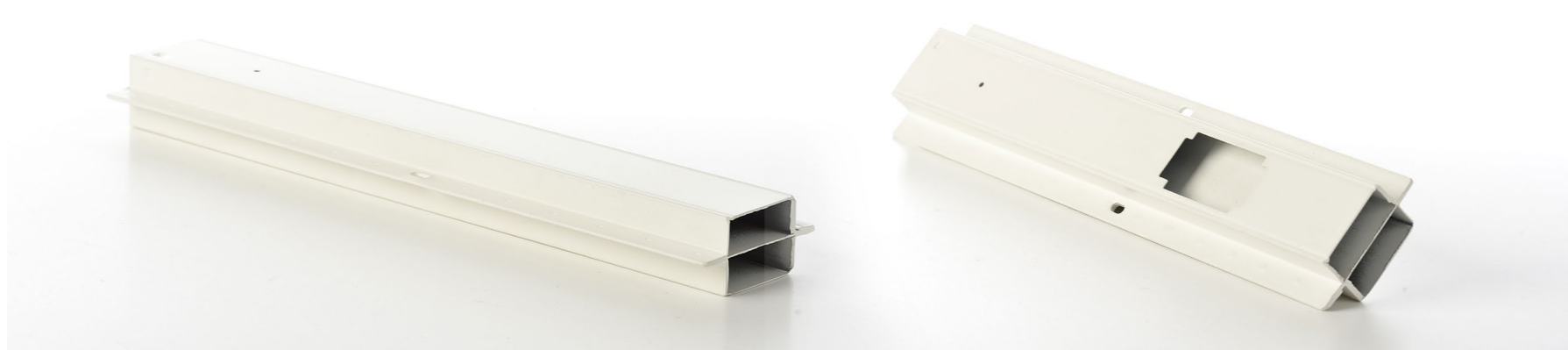


SCAFFALATURE | RACKINGS
RAYONNAGE | RACKINGS



PROFILI ELETTRICI | ELECTRICAL PROFILES
PROFILS ÉLECTRIQUES | ELEKTROPROFILE







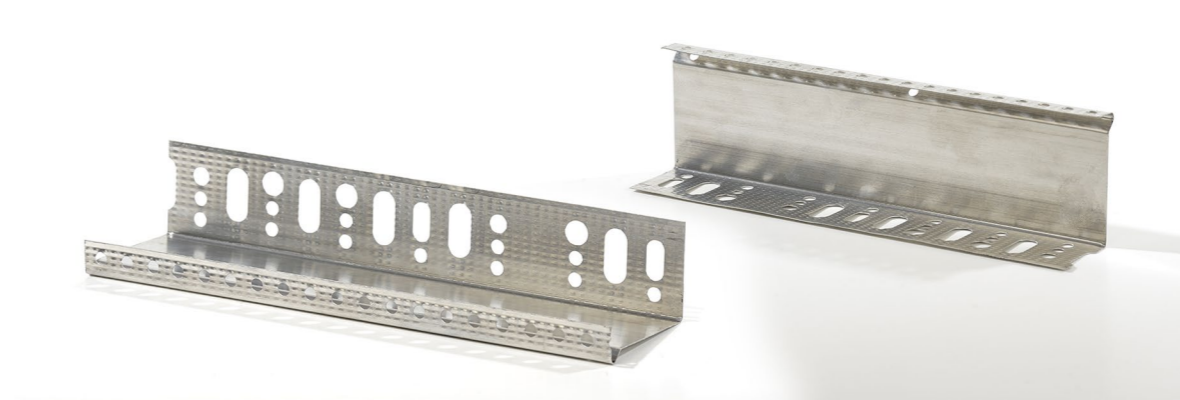
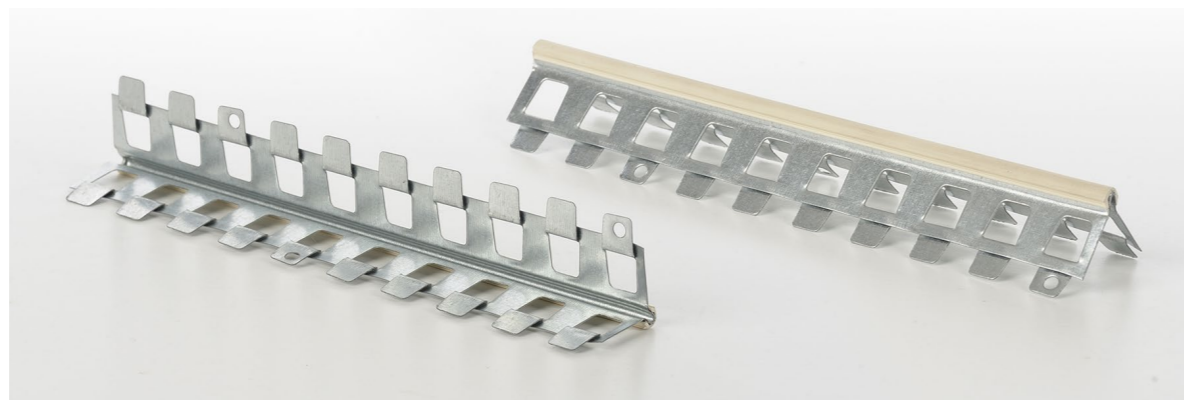
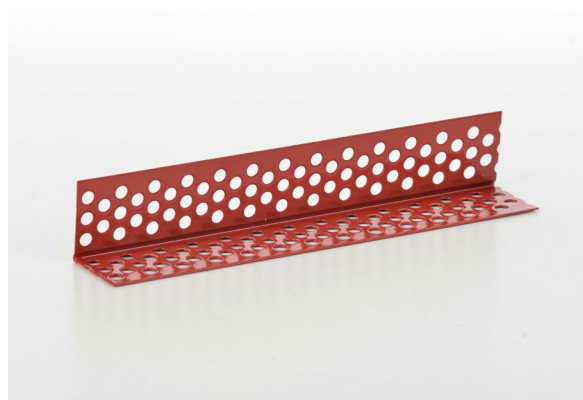
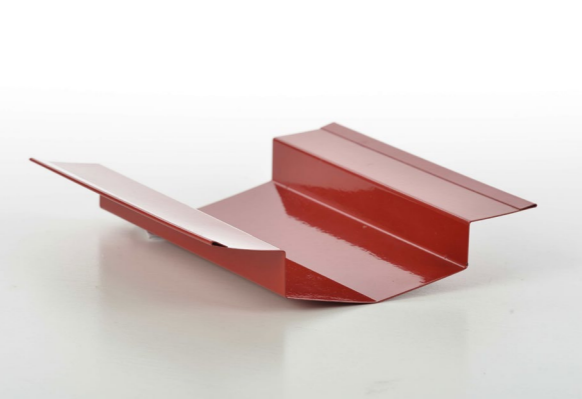
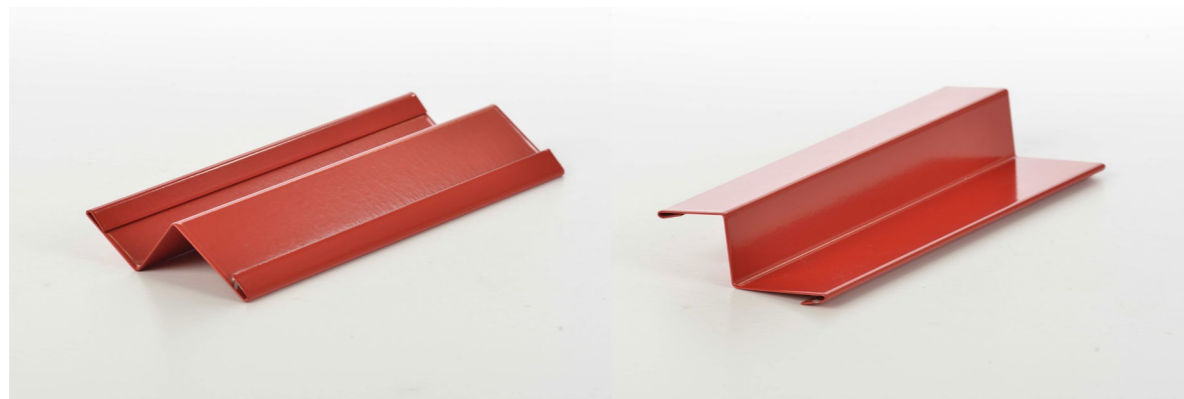
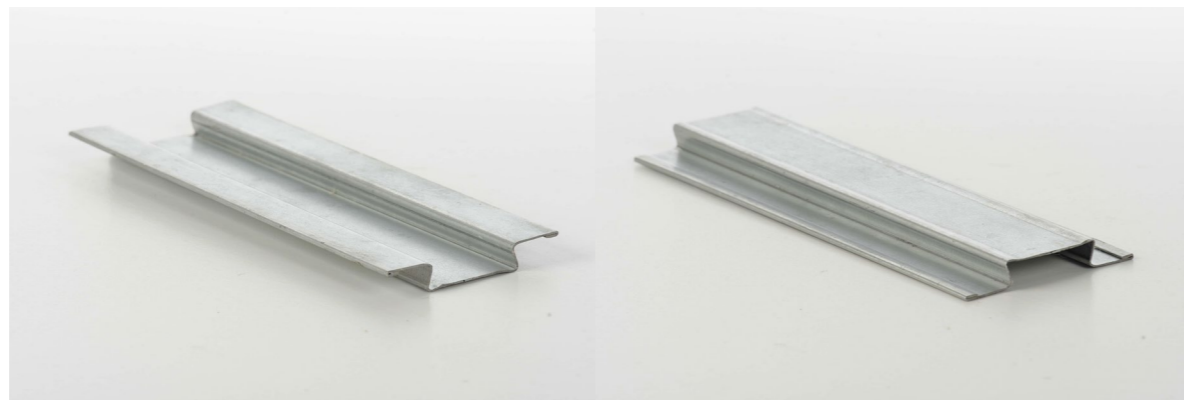
PROFILI STRUTTURALI | **STRUCTURAL PROFILES**
PROFILS STRUTTURAUX | STRUKTURPROFILE



PROFILI CIRCOLARI | **CIRCULAR PROFILES**
PROFILS CIRCULAIRES | KREISPROFILE



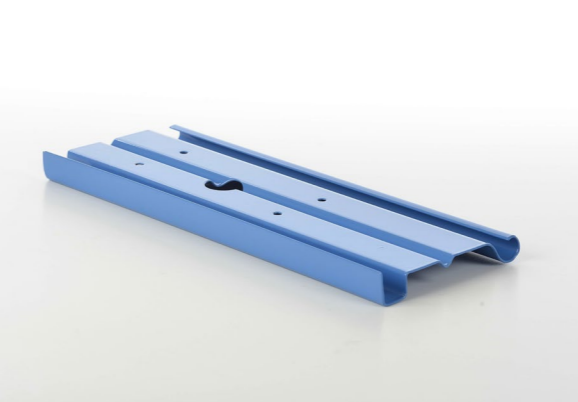
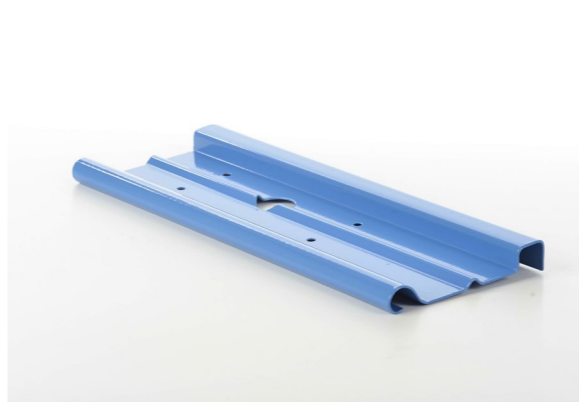
RIVESTIMENTI E CARTONGESSO | COVERINGS AND PLASTERBOARD
REVÊTEMENTS ET PLACOPLÂTRE | BEKLEIDUNGEN UND GIPSKARTON



TUBI GRAFFATI E SALDATI | CRIMPED AND WELDED PIPES
TUBES AGRAFÉS ET SOUDÉS | GEFALZTE ODER GESCHWEISSTE ROHRE



VARI | VARIOUS
DIVERS | SONSTIGE



VENTILAZIONE E TAGLIAFUOCO | **VENTILATION AND FIRE DAMPER**
VENTILATION ET COUPE-FEU | **BELÜFTUNG UND FEUERSCHNITT**

